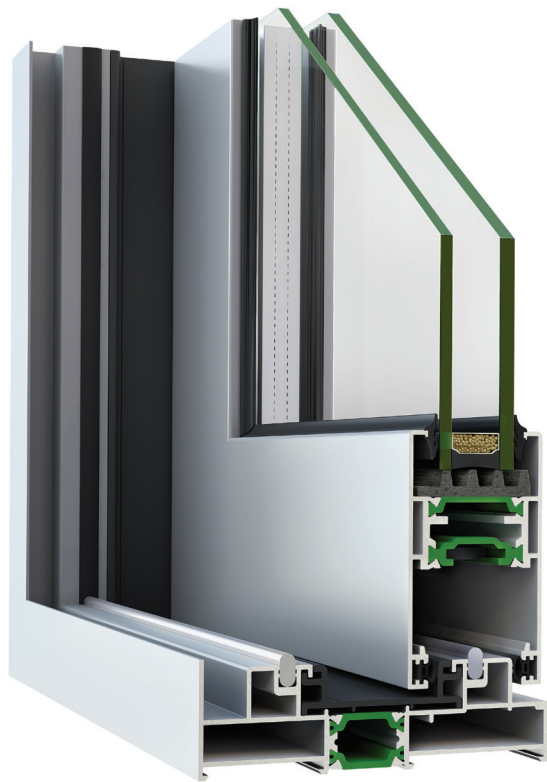


SL2450

Sliding Thermal
Insulating System

with minimal face widths.



SLIDING SYSTEMS



System Identity

SL2450 is the next generation that upgrades the AL220 existing product line, offering unlimited enhanced features and unrivaled characteristics. The SL2450 harmoniously combines all the functional benefits of a minimal lift and slide system and at the same time offers impressive thermal insulation, water tightness and resistance to wind pressure. The system combines up to date architectural aesthetics and exceptional functionality along with top durability and performance. The architectural aesthetics are depicted on the 51mm wide central sloping hook profile which permits greater visibility and flow of light, while the low threshold level driver offers extra comfort and easier access. The advanced HS-200 lift mechanism offers unique functionality resulting in easier and silent rolling of the sliding construction while the specially designed profile with an integrated handle ensures the system's robustness and increased resistance to wind pressure. In order to improve its performance, the SL2450 is equipped not only with 32 mm glass reinforced polyamides but also with special perimeter gaskets that offer complete thermal insulation and waterproofing. Offering higher expectations than the conventional applications do and suitable for large openings, the SL2450 offers many more options and opportunities to the modern professional, and is therefore upgraded in one of the most efficient systems in its category.

Features & Benefits

- High level of thermal insulation due to the 32 mm glass reinforced polyamides.
- Minimal style and straight lines in combination with the low driver offer particularly elegant structures and facilitate the access.
- Profile width 51 mm at the junction point in order to maximize transparency and light penetration.
- The lift sliding mechanism offers smooth sliding and maximum functionality along with even better thermal insulation.
- The built-in handle at the junction point of the slim hook, offers higher strength and robustness in construction and increased resistance to wind pressure.
- Ability to implement a variety of typologies.
- Fast and easy installation.
- Ideal solution for new constructions and hotel renovations.

Configurations

Lift - sliding

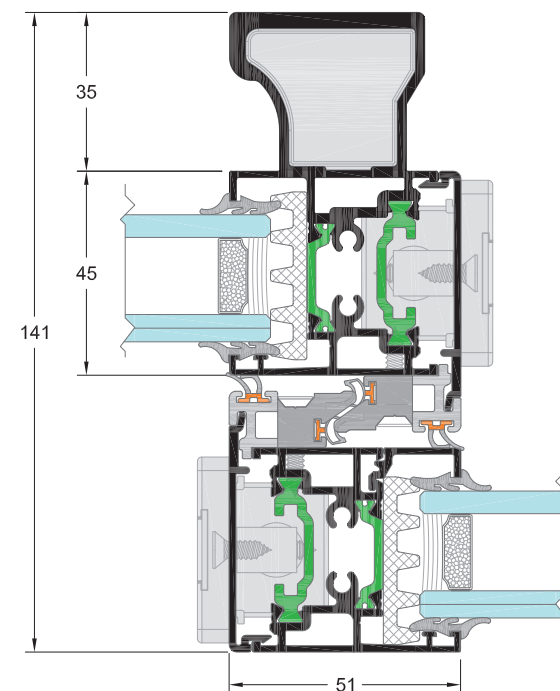
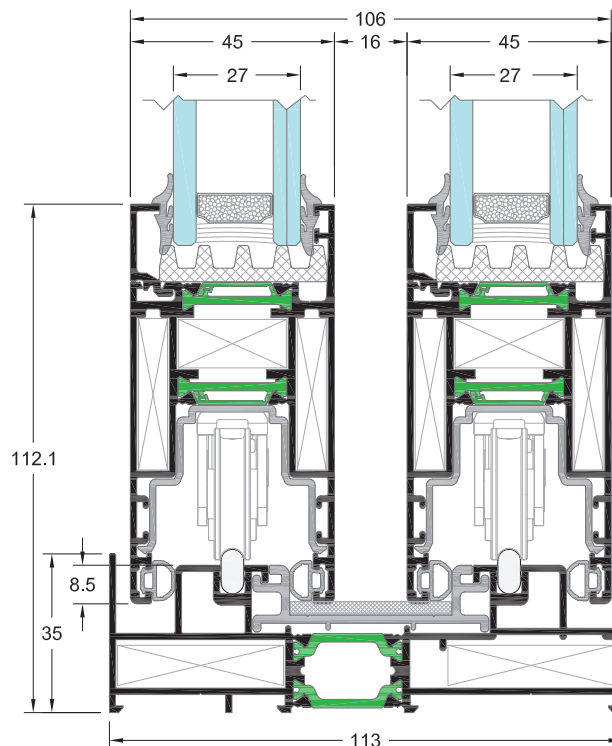
2Leaf sliding, 3Leaf sliding, 4Leaf double sliding, 6Leaf double sliding, 2Leaf sliding with insect screen, 2Leaf sliding with fixed, 2Leaf sliding with fixed and insect screen, 1Leaf sliding with fixed

Lift - sliding pocket

1Leaf-2Leaf sliding with glass, 1Leaf-2Leaf sliding pocket with glass-insect screening system, 1Leaf-2Leaf with glass-rolling shutters, 1Leaf-2Leaf with glass-insect screen-rolling shutters.



FLAT



HARDWARE

SLIDING	•
LIFT & SLIDE	•

INSULATION

POLYAMIDES mm	16-32
---------------	-------

SYSTEM PROFILE DIMENSIONS

FRAME LIFT & SLIDE WIDTH mm	113
MIN. FRAME HEIGHT mm	35
MIN. FACE HEIGHT mm	112.1
MIN. WIDTH OF HOOK (MIDDLE SECTION):	51
GLASS THICKNESS mm	27

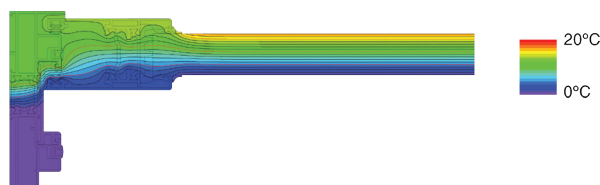
CONSTRUCTION DIMENSIONS

SASH WIDTH mm	330-2000
SASH HEIGHT mm	1200-2700
MAX. SASH DIMENSIONS mm (WxH)	2000x2400 / 1600x2700
MAX. SASH WEIGHT Kg	200-250*

CERTIFICATES/PERFORMANCES

OPERATING FORCES EN 13115	Class 1
AIR PERMEABILITY EN 12207	Class 4
WATER TIGHTNESS EN 12208	Class 3A
RESISTANCE TO WIND LOAD EN 12210	Class C4/B4
BURGLAR RESISTANCE EN 1627	N/A
SOUND REDUCTION R _w (C;Ctr) EN 717	40 (-2;-7) dB
THERMAL INSULATION U _f ISO 10077-2	1.9-5.3 W/m ² K

* 250 Kg EXM Mechanism



Rate of Insulation

U_w=1.59 W/m²K

Thermal conductivity coefficient has been calculated for the construction: 4500x2500 with U_g=1.1 W/m²K
Glass type: 3+3 /16 (ARGON) / 5