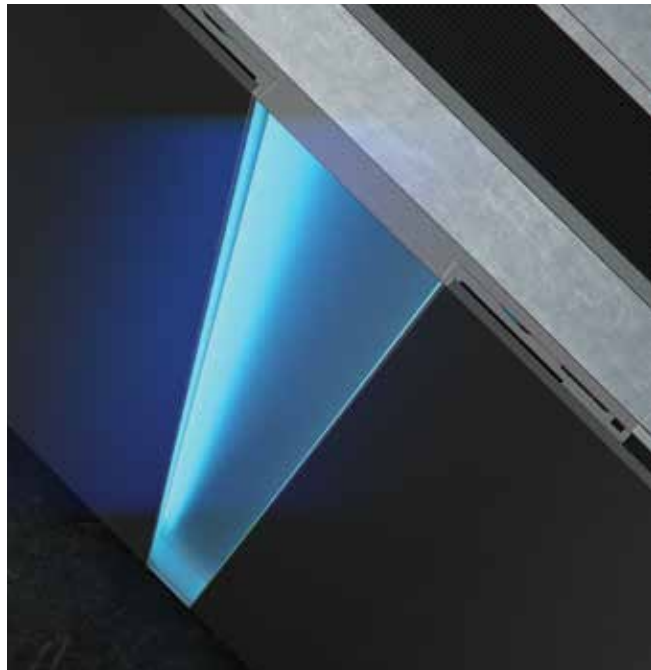


D110

Pivot Door System

the epitome
of magnificence.



ENTRANCE DOOR

24



System Identity

Combining innovative technologies with special design lines, D110 Pivot Door by Aluminco creates the perfect entry into a home or commercial property.

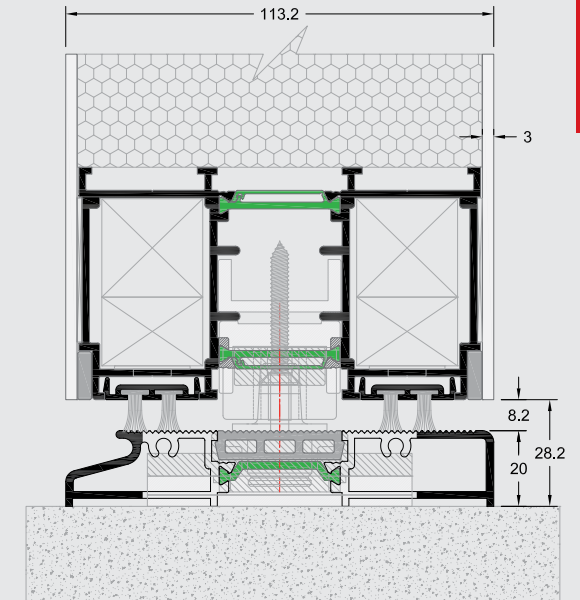
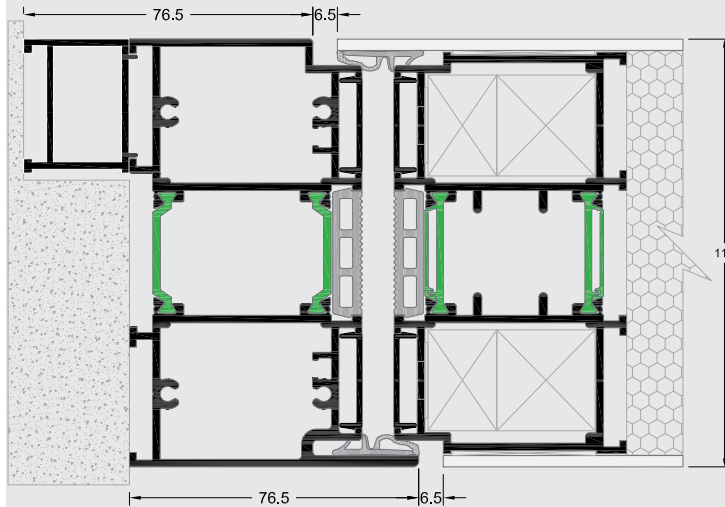
Impactful and beautiful design options, amazing strength, powerful hardware, massive panels, open with ease, are combined to make our pivot door the number one choice for entry doors.

Features & Benefits

- Anti-bi-metal polyamides, 32 mm, minimize the operational problems due to the temperature difference between inside and outside.
- Hidden pivot mechanism with door adjustment feature (right – left).
- On-floor powerful rotation mechanism.
- Hidden brake mechanism ensures slow and safe closing of the door, reducing the noise level and minimizing the risk of injury.
- Stainless steel 3, 5 and 17-point lock with safety cylinder.
- Low 20 mm threshold provides easy access, suitable for people with disabilities.
- Integrated recessed external handle of special design. The handle can optionally be illuminated by LED technology.
- Frame and sash create a flat surface.

Configurations

Door system



SYSTEM PROFILE DIMENSIONS

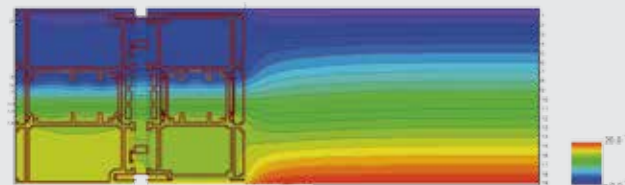
FRAME DEPTH mm	113
DOOR THICKNESS mm	113
ALUMINIUM SHEET THICKNESS mm	3
INSULATION THICKNESS mm	107
ROTATION AXE FROM SASH END mm	250

CONSTRUCTION DIMENSIONS

SASH WIDTH mm	1000-2000
SASH HEIGHT mm	2100-3000
MAX. SASH DIMENSIONS mm (WxH)	1700x3000
MAX. SASH WEIGHT mm Kgr	250

CERTIFICATES/PERFORMANCES

AIR PERMEABILITY EN 12207	N/A
WATER TIGHTNESS EN 12208	N/A
RESISTANCE TO WIND LOAD EN 12210	N/A
BURGLAR RESISTANCE	N/A
SOUND REDUCTION Rw EN 140-3	N/A
THERMAL INSULATION Uf ISO 10077-2	Uf=2.25-2.66 W/m²K



Rate of Insulation

Ud=0.88 W/m²K

Thermal conductivity coefficient has calculated for the construction:
1800x2500 with Up=0.29 W/m²K
Type of panel: 3/107/3